



CHARTWELL MARINE

ZELIM “GUARDIAN CLASS” FRC

REFINING THE FORMULA FOR OFFSHORE SAFETY



FEATURES

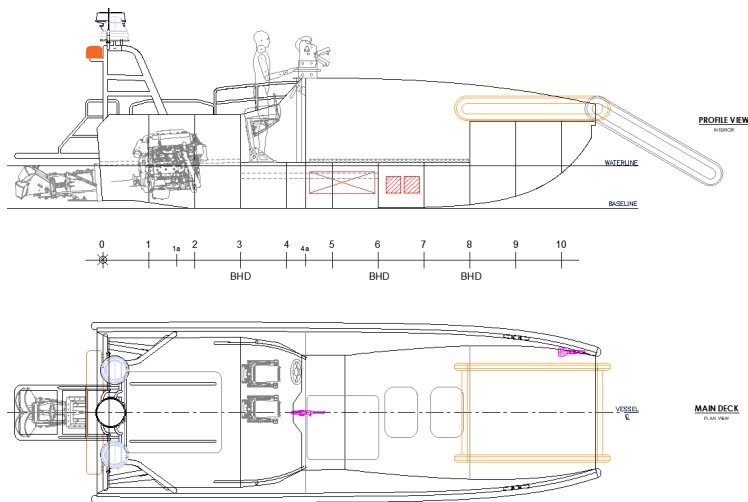
BUILT FOR SAVING LIVES AT SEA

The “Guardian Class” FRC vessel is a fast rescue craft able to perform transit & rescue operation procedures in an offshore environment.

It is launched from a LARS davit cradle installed at deck level on a mother ship and recovered offshore via hooking on to the bow painter and subsequently to the LARS lifting hook, lowered to water level.

The vessel is capable of operating in up to 4m HS (Sea State 6) in transit and casualty recovery operations. It is to transit to a point of interest where casualties in the water have been detected, whereby it will then deploy the patented ZELIM Conveyor Recovery System (CRS) to recover persons from the water to onboard the vessel.

Propulsion is to be a single diesel inboard motor (400HP subject to chosen configuration), coupled to a waterjet.



LOA	8.4m
BOA	2.55m
DRAFT	0.6m
DISP.	3.8t (excl. recovered POB)
SPEED	30+ kts
CREW	Unmanned / 2 x POB (“lite” manned option)
RESCUED POB	Up to 9 personnel
LARS	Single lift / 4-point lift
CODING	SOLAS LSA Code compliant & Self-righting

ABOUT

CHARTWELL MARINE

Chartwell Marine is a pioneer in next-generation vessel design. A reputed naval architect with an industry-leading track record designing award-winning high-speed vessels, Chartwell Marine supports ambitious boat builders and vessel operators around the world with specialist, independent design and consultancy services.

CONTACT US

To find out more about Chartwell Marine , please visit:

<http://www.chartwellmarine.com>

